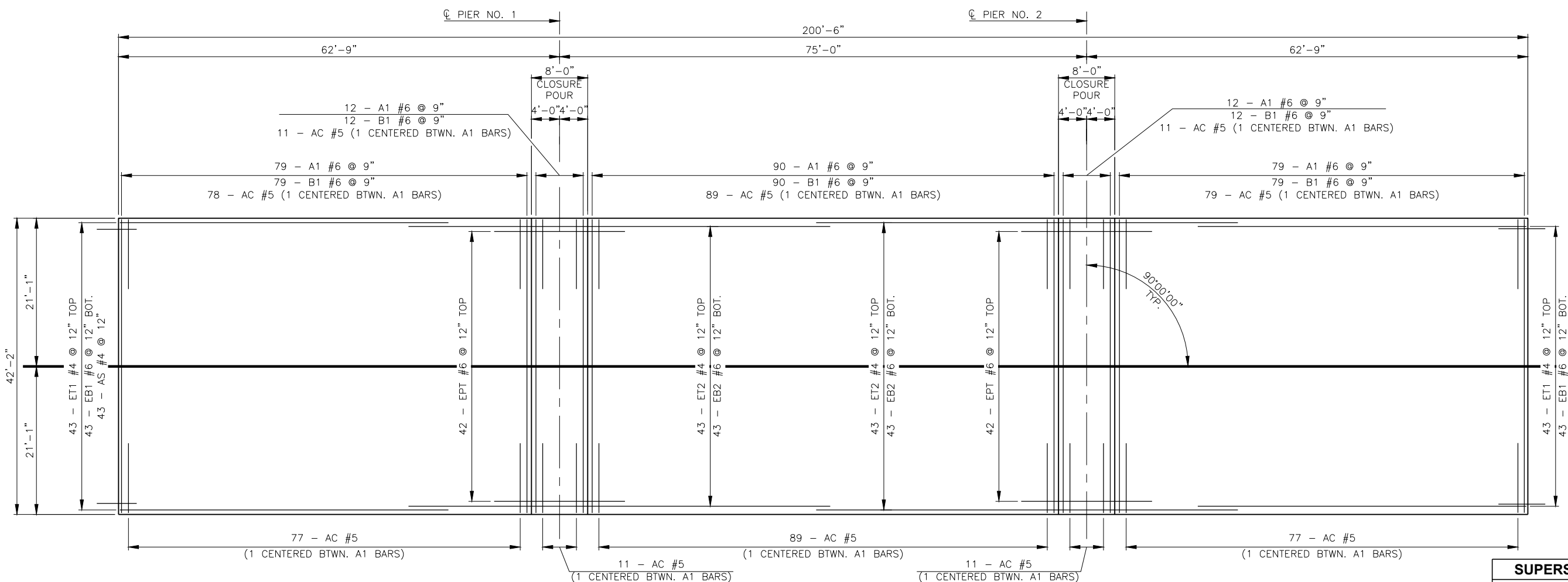


DESCRIPTION	REVISIONS	DATE
REMOVED PRELIM. STAMP		7-12-16



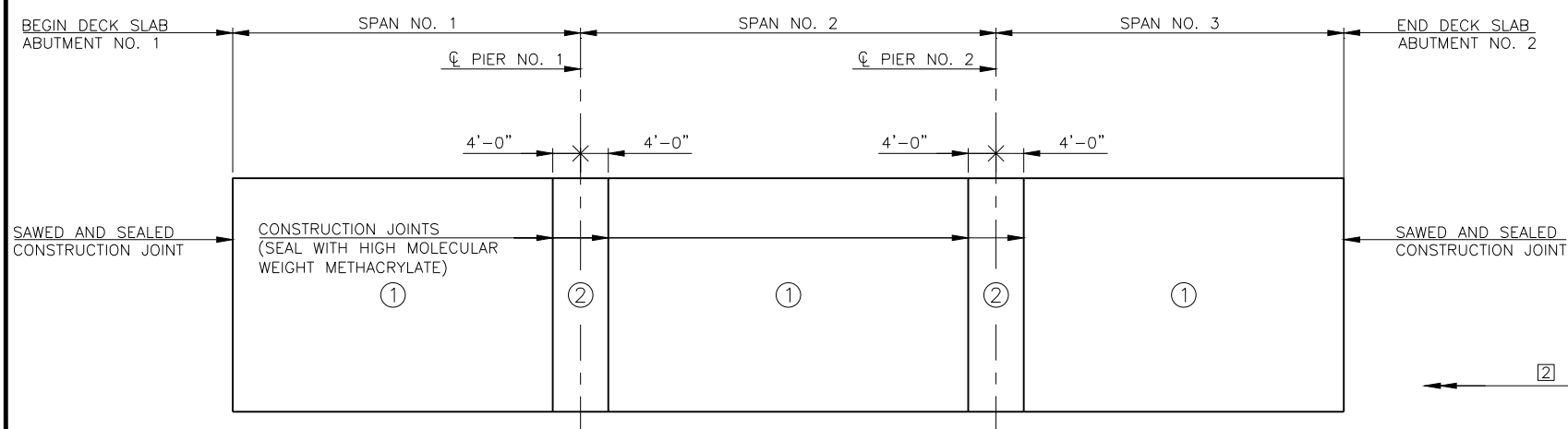
C.R.L. & P.G.L. SH34
N 00°56'58.45" E

SLAB REINFORCING PLAN

SUPERSTRUCTURE BAR LIST

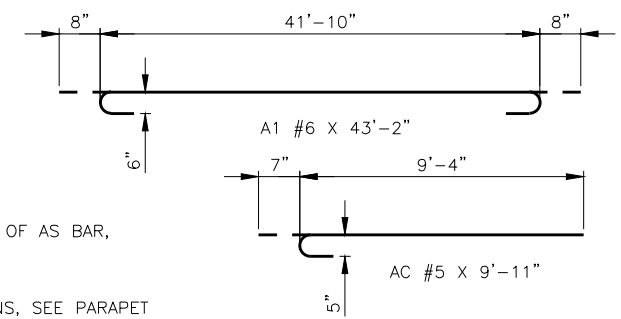
EPOXY COATED REINFORCING				
MARK	SIZE	NO.	FORM	LENGTH
A1	#6	272	BNT.	43'-2"
AC	#5	534	BNT.	9'-11"
AS	#4	86	BNT.	5'-0"
B1	#6	272	STR.	41'-10"
EB1	#6	86	STR.	45'-11"
EB2	#6	86	STR.	60'-0"
EPT	#6	84	STR.	12'-0"
ET1	#4	86	STR.	43'-2"
ET2	#4	86	STR.	60'-0"
F1	#4	168	STR.	8'-1"
SR1	#5	864	BNT.	4'-1"
U1	#4	252	BNT.	4'-1"

- ① PROVIDE CONTINUOUS REINFORCING THROUGH CONSTRUCTION JOINTS AT PIERS. DO NOT LAP WITHIN 10'-0" OF CENTERLINE OF PIER. MINIMUM LAP LENGTH OF EB1 TO EB2 IS 3'-10".
- ② PROVIDE CONTINUOUS REINFORCING THROUGH CONSTRUCTION JOINTS AT PIERS. DO NOT LAP WITHIN 10'-0" OF CENTERLINE OF PIER. MINIMUM LAP LENGTH OF ET1 TO ET2 IS 2'-0".
- ③ FOR BAR BEND, SEE STD. TR4-2.

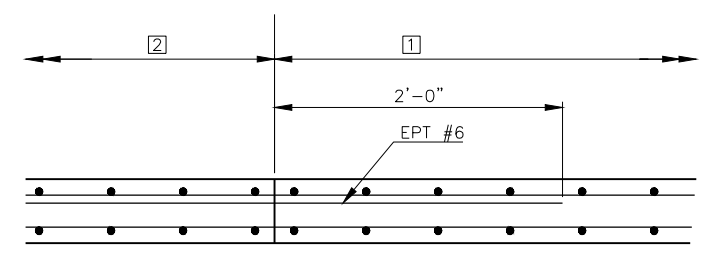


DECK SLAB POURING SEQUENCE DIAGRAM

NOTE:
THE DECK SLAB IS DIVIDED INTO SECTIONS BETWEEN CONSTRUCTION JOINTS AS SHOWN. PLACE THE DECK SLAB CONCRETE OF EACH SECTION IN THE NUMERICAL SEQUENCE INDICATED. SECTIONS OF THE DECK SLAB WITH THE SAME NUMBER MAY BE PLACED IN ANY ORDER. SECTIONS IN SEQUENCE 2 MAY BE PLACED BEFORE ALL OF THE SEQUENCE 1 ARE COMPLETED IF SEQUENCE 1 AT THE COMMON CONSTRUCTION JOINT IS COMPLETE.



NOTE:
FOR ADDITIONAL DETAIL OF AS BAR, SEE SHEET 39.
NOTE:
FOR SR1 BAR LOCATIONS, SEE PARAPET ELEVATION ON SHEET 33.



CONSTRUCTION JOINT DETAIL

DESIGN	J.W.H.	SH34 OVER S. PERSIMMON CREEK	WOODWARD COUNTY
DRAWN	R.A.P.	BRIDGE A	
CHECKED	J.W.H.	SLAB REINFORCING PLAN	
APPROV.	T.A.C.		
SQUAD	CEC		
		JOB PIECE NO. 28825(04)	SHEET NO. 40